

# Quick & Easy Fleece Beanie

sizes toddler, small adult & large adult  
(adjustments for larger sizes are in parenthesis)

## materials:

sewing machine with zig zag, or a serger  
largest size requires: 23 x 12" square of fleece  
thread to match



photo © 2006 Patti Pierce Stone, all rights reserved

- ..... toddler - 19"
- sm adult - 21"
- large adult - 23"

Cut a square of fleece 19" (21", 23") x 11" (11½", 12"), being certain the stretch of the fleece runs the direction of the wide measurement.

Fold the fabric in half across the width, then half again.  
(finished rectangle will be 4¾" x 11" (5¼" x 11½", 5¾" X 12")

Place template so the sides touch each side of the rectangle and the point touching the top edge.

Using scissors (or a rotary cutter) and beginning at the horizontal line on the template, cut along the marked line to the point at the top.

**To assemble**, lay the fleece on a flat surface. (fig 1) Fold each side to the center, aligning the petal shapes at the top.

Using a straight stitch (if sewing), seam from the point to approx. 1" past the top of the folded edge of one petal as if making a dart. Repeat for other petal.

Now fold the fabric in half, right sides together. Match and pin in the just-stitched seams together.

Beginning at the bottom edge seam up the side, across the top and across the folded edge as for the other petals.

**To hem**, with wrong side facing, turn up a 2½" (2½", 3") hem. Pin at four or five points.

Next lay your fabric with the folded hem facing up and the outer folded edge of the hem to the right. (fig 2)

Turn the pinned hem to the inside of the hat, leaving ¼" of hem showing. Original fold is now facing the top of the hat from the inside. (fig 3)

Place the hat under the presser foot with the folded edge of the cuff at the flat vertical bar of the presser foot... the ¼" edge of the hem that sticks out from the cuff should be beneath the needle.

Using a blind hem stitch or wide zig zag, stitch around the hem. If using a zig zag, only the left side of the stitch should pierce the folded fabric.

If hemming on a serger, put your cutter in a non-working position and serge around with a wide st. Serged hems will have a visible seam on the right side.

The hat in the picture was hemmed with a blind hem stitch.

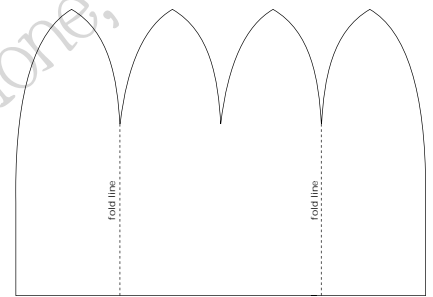


fig 1

**stop cutting here!**

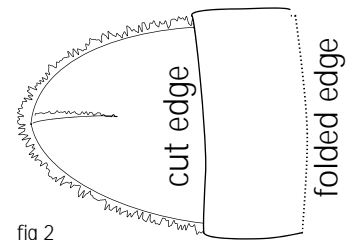


fig 2

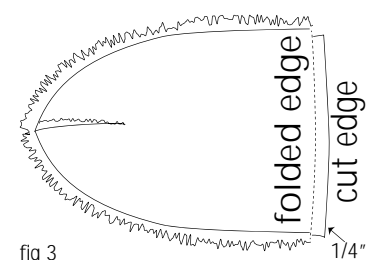


fig 3