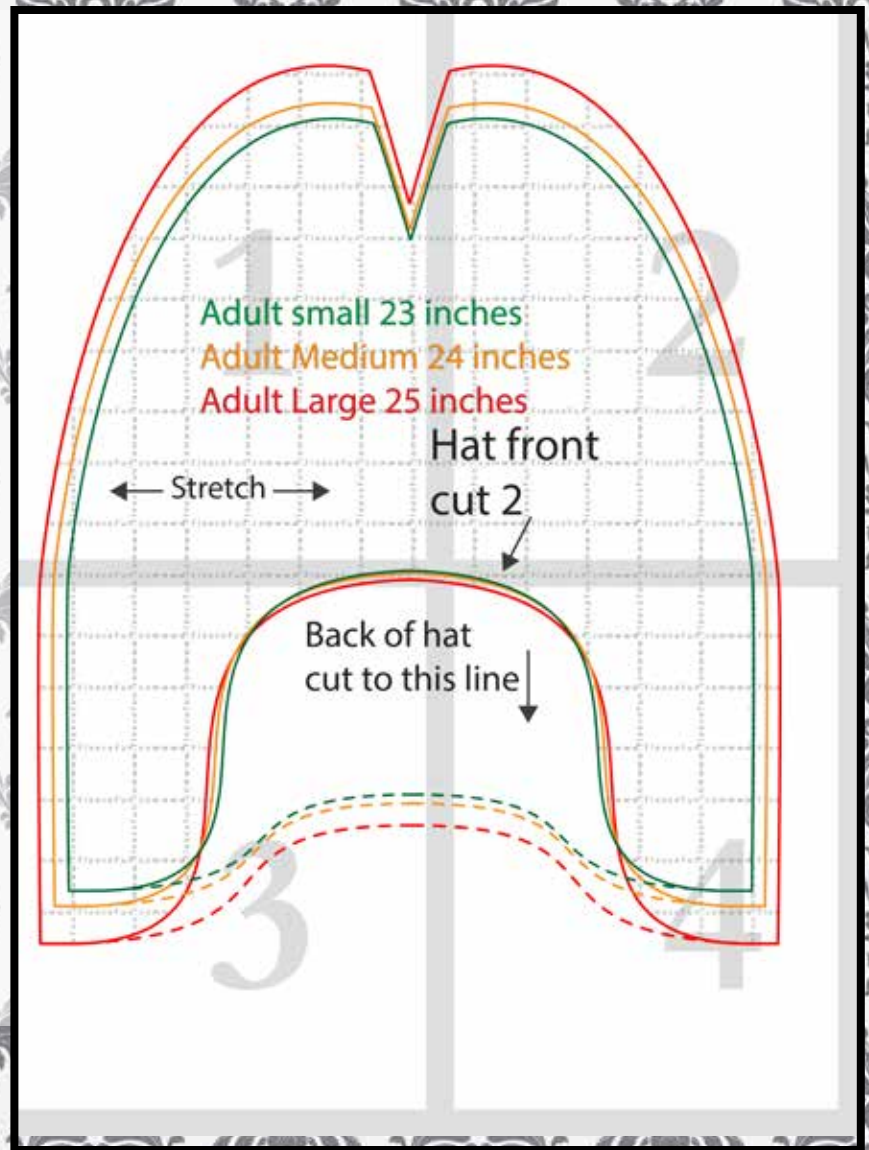


Map 4 pieces

Confused on how to
assemble the pattern?
No worries!

Just [click here](#) for an
easy step by step vid-
eo to show you how
to assemble the pat-
tern.



You might also like
(Click envelope to go to):



Adult small 23 in

Adult Medium 24 in

Adult Large 25 in

← Stretch →



inches

24 inches

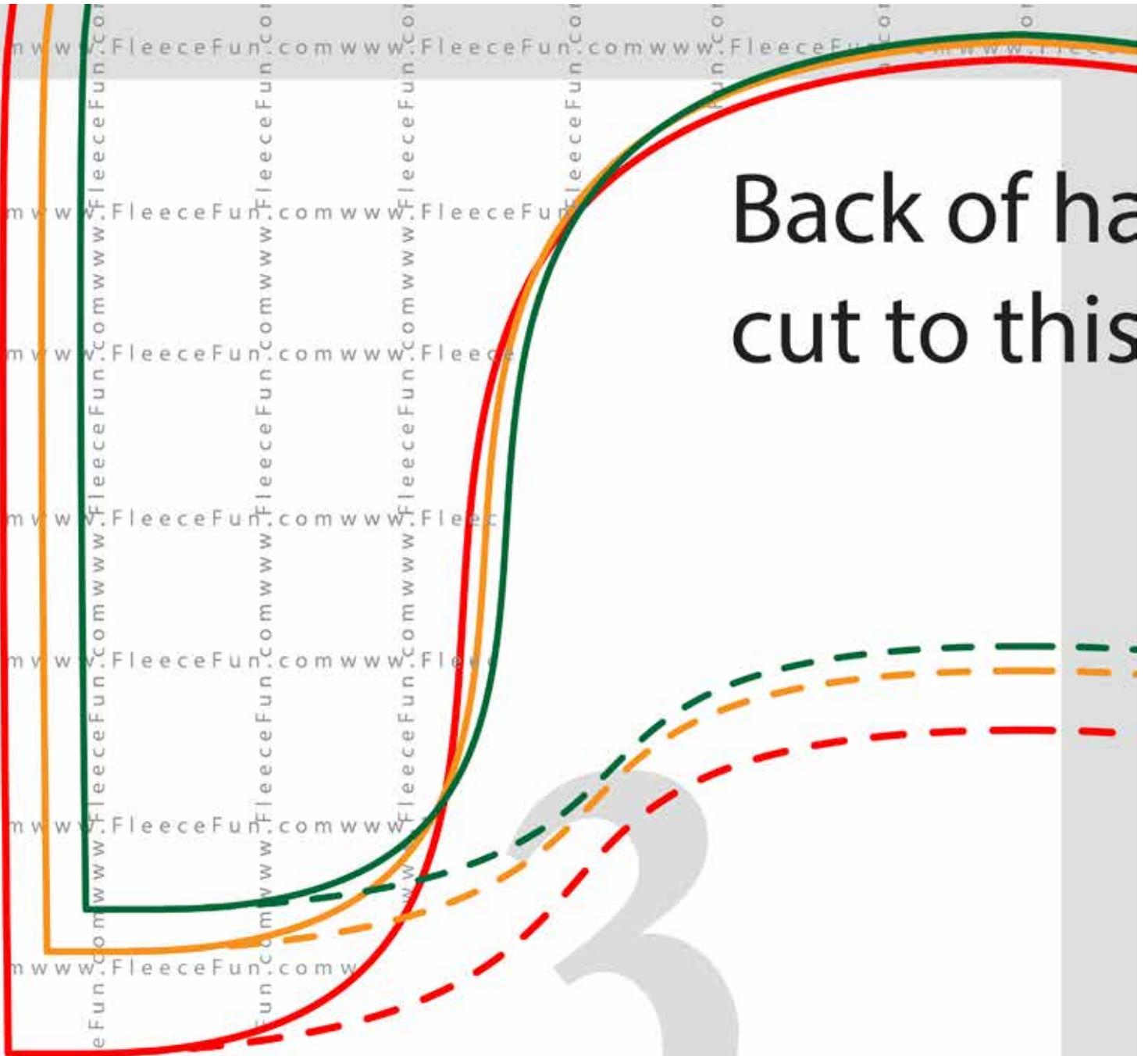
inches

Hat front

cut 2



Back of ha
cut to this



What
is this line

