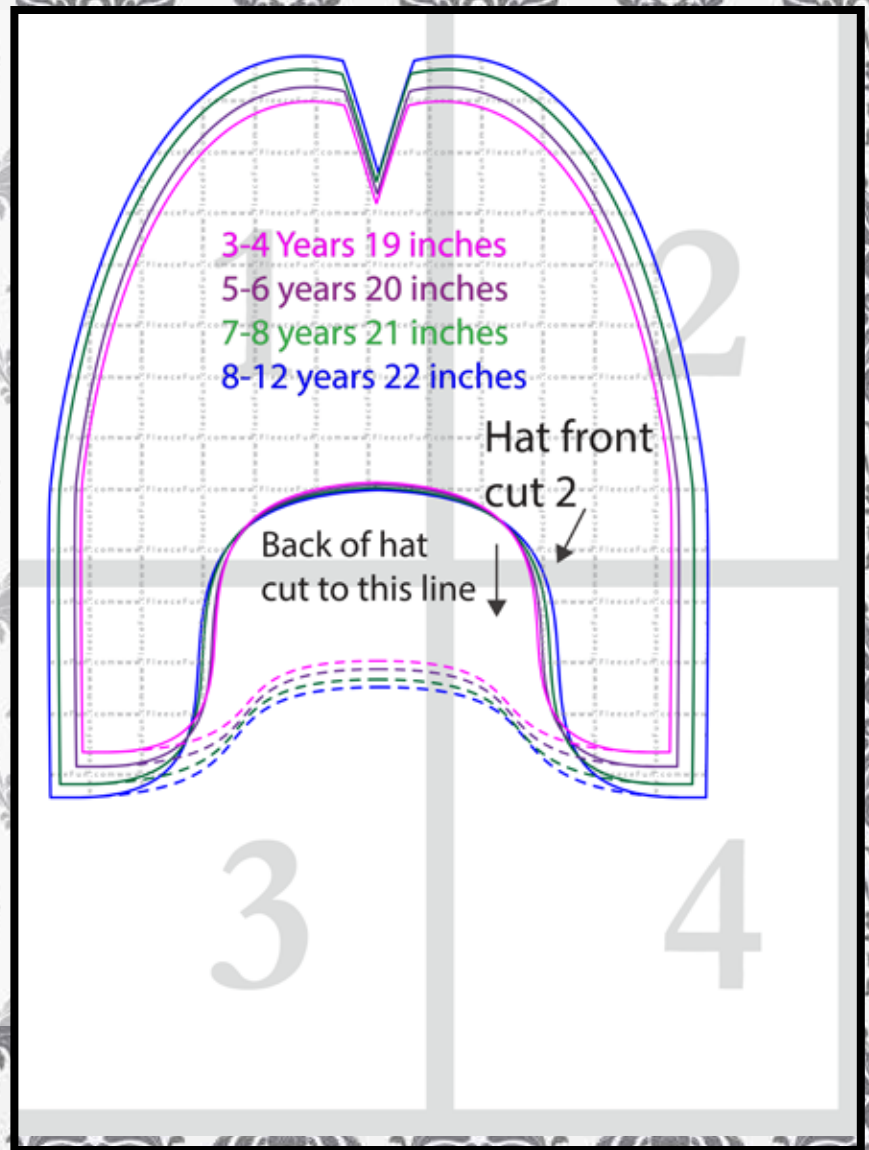


# Map 4 pieces

Confused on how to assemble the pattern?  
No worries!

Just [click here](#) for an easy step by step video to show you how to assemble the pattern.



You might also like  
(Click envelope to go to):



3-4 Years 19 inc

5-6 years 20 inc

7-8 years 21 inc

8-12 years 22 inc

← Stretch →

Back of hat

cut to this line

6 inches

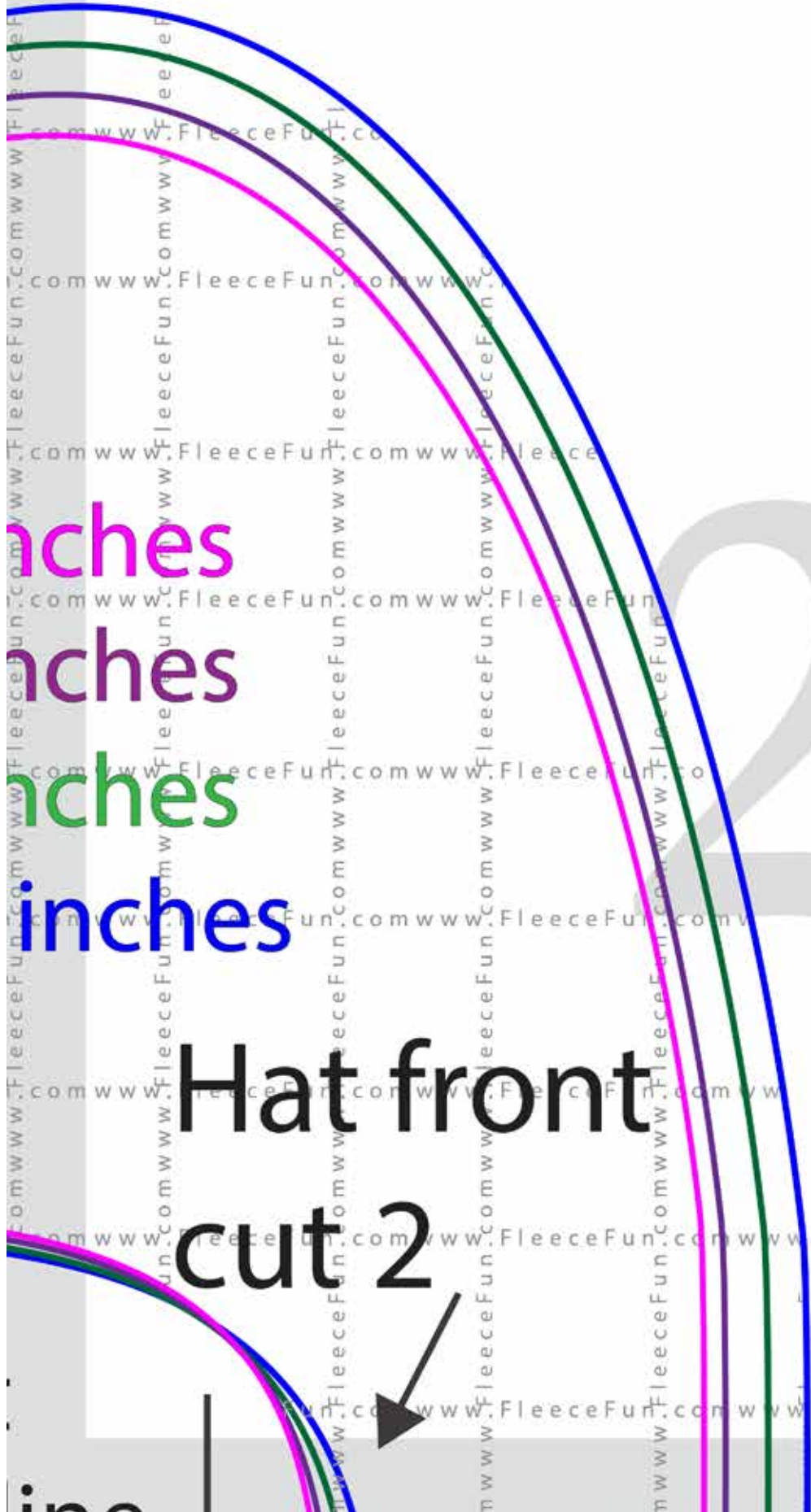
5 inches

4 inches

3 inches

Hat front

cut 2



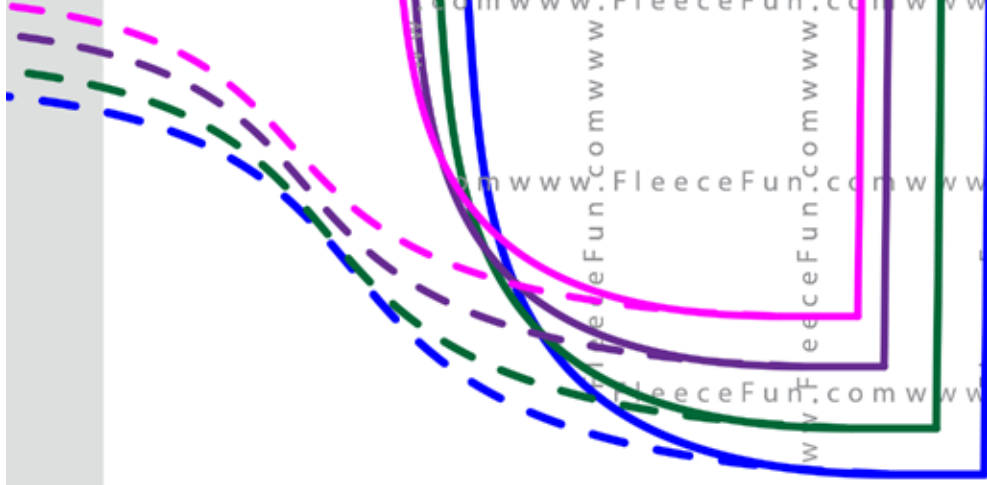
cut to this line



3



ine



4